

=====
QUOTE INFORMATION:
=====
Quote Id:
Purchaser:
Project: Riding Arena

=====
SteelBuildingSupplier.com
225 S Academy Blvd Ste 201
Colorado Springs CO 80910
800.793.8555
Contact:
=====

Customer Info:

Quote good for 7 days

=====
BUILDING TYPE
=====

Commercial Rigid Frame Steel

=====
PRICING
=====

Table with 2 columns: Building Components, \$
Subtotal \$
State Tax (7.31%) \$
Building Freight \$
Detail/Draft Fee \$
Stamped Plan Sets (1) \$
TOTAL COST \$

=====
BUILDING LOCATION
=====

NM 87508

=====
BUILDING DESIGN SPECIFICATIONS
=====

Table with 2 columns: Dimensions, Loading
Width(ft): 100, Length(ft): 150, Back eave height(ft): 18, Front eave height(ft): 18, Back roof slope: 2.0:12, Front roof slope: 2.0:12
Wind Code: IBC 00 Exposure: B, Wind (mph): 90 Importance: 1.00, Roof Live Load (psf): 20, Roof Dead Load (psf): 2, Roof Snow Load (psf): 30, Roof Collateral Load (psf): 1, Seismic: -

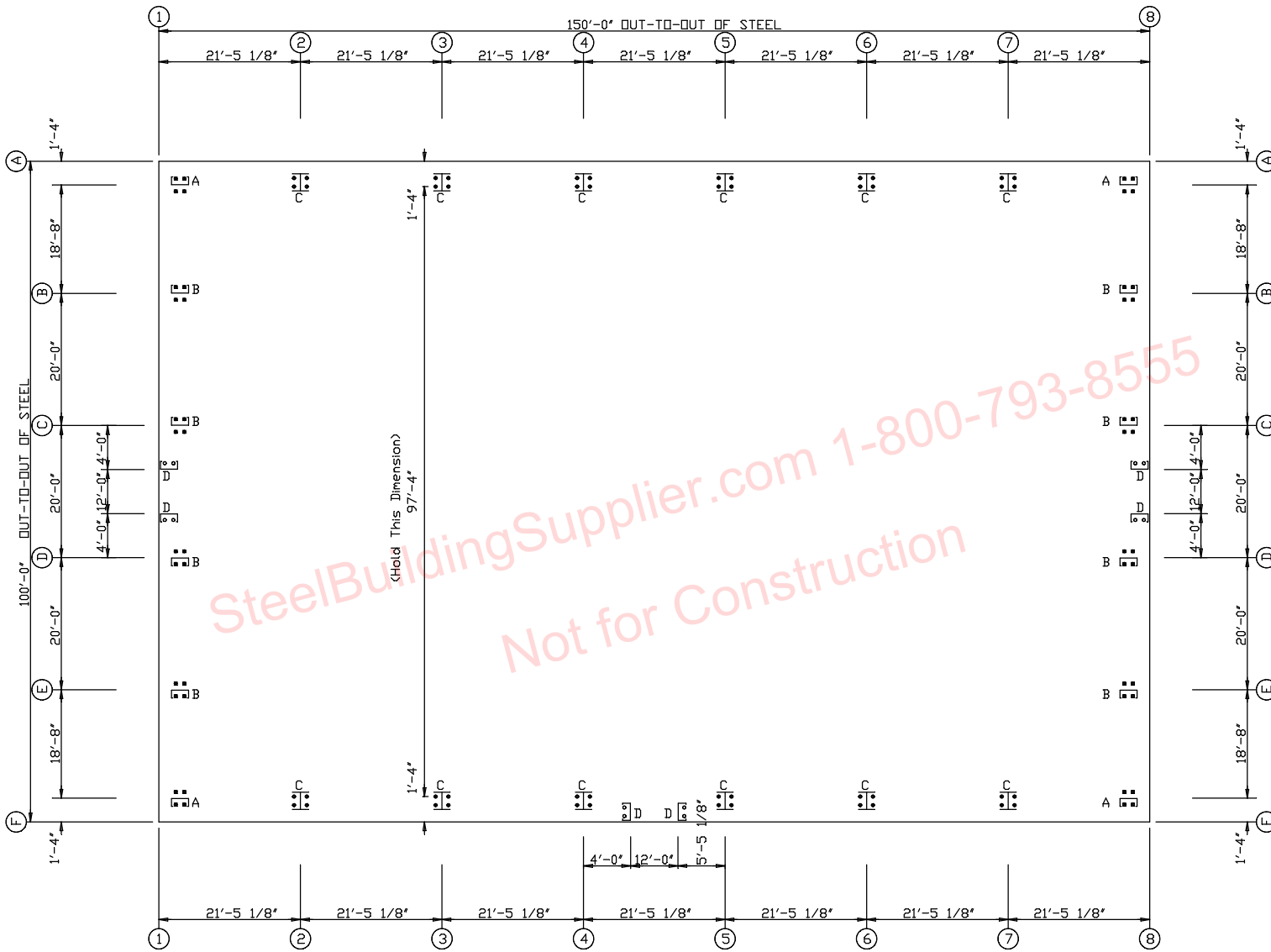
Engineering:
Stamped Plan Sets: 1
Design Calc Sets: none

Covering:
Roof: 26 Gauge, Classic Roof (PBR) Panels, Color: Galvalume
Sidewall: 26 Gauge, Classic Wall (PBR) Panels, Color: NEED COLOR
Endwall: 26 Gauge, Classic Wall (PBR) Panels, Color: NEED COLOR
Sidewall trim at eave : NEED COLOR
Endwall (rake) trim at roof : Galvalume
Outside jamb sheeting trim color: NEED COLOR
Outside corner trim color : NEED COLOR

Framing:
----- Interior -----
6 rigid frames, clear span

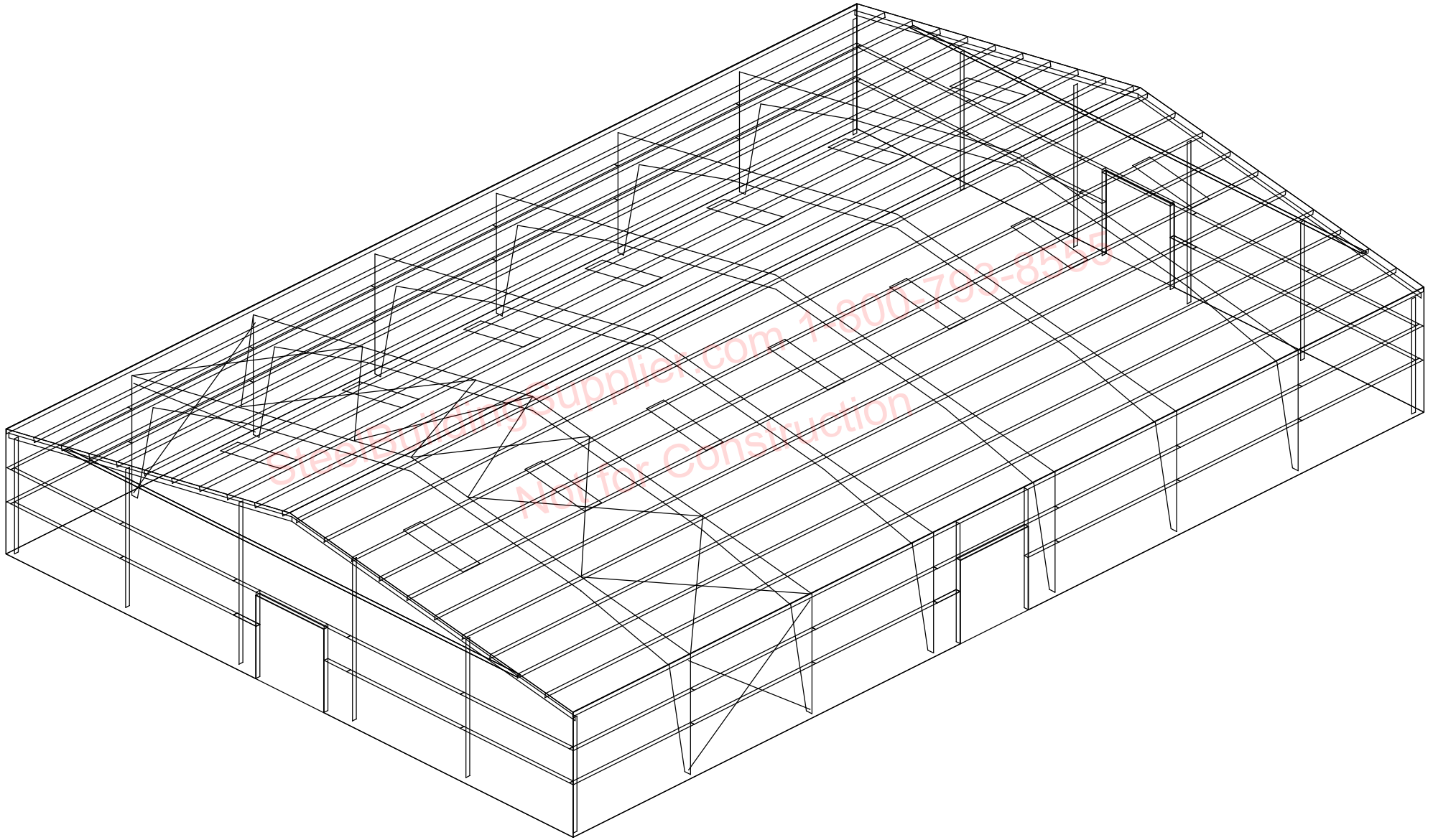
ANCHOR BOLT SUMMARY

Qty	Loc	Dia (in)	Proj (in)
12	DJ	1/2"	3.00
48	EW	3/4"	3.00
48	EW	1 1/4"	3.00



ANCHOR BOLT PLAN
NOTE: All Base Plates @ 100'-0" (U.N.)

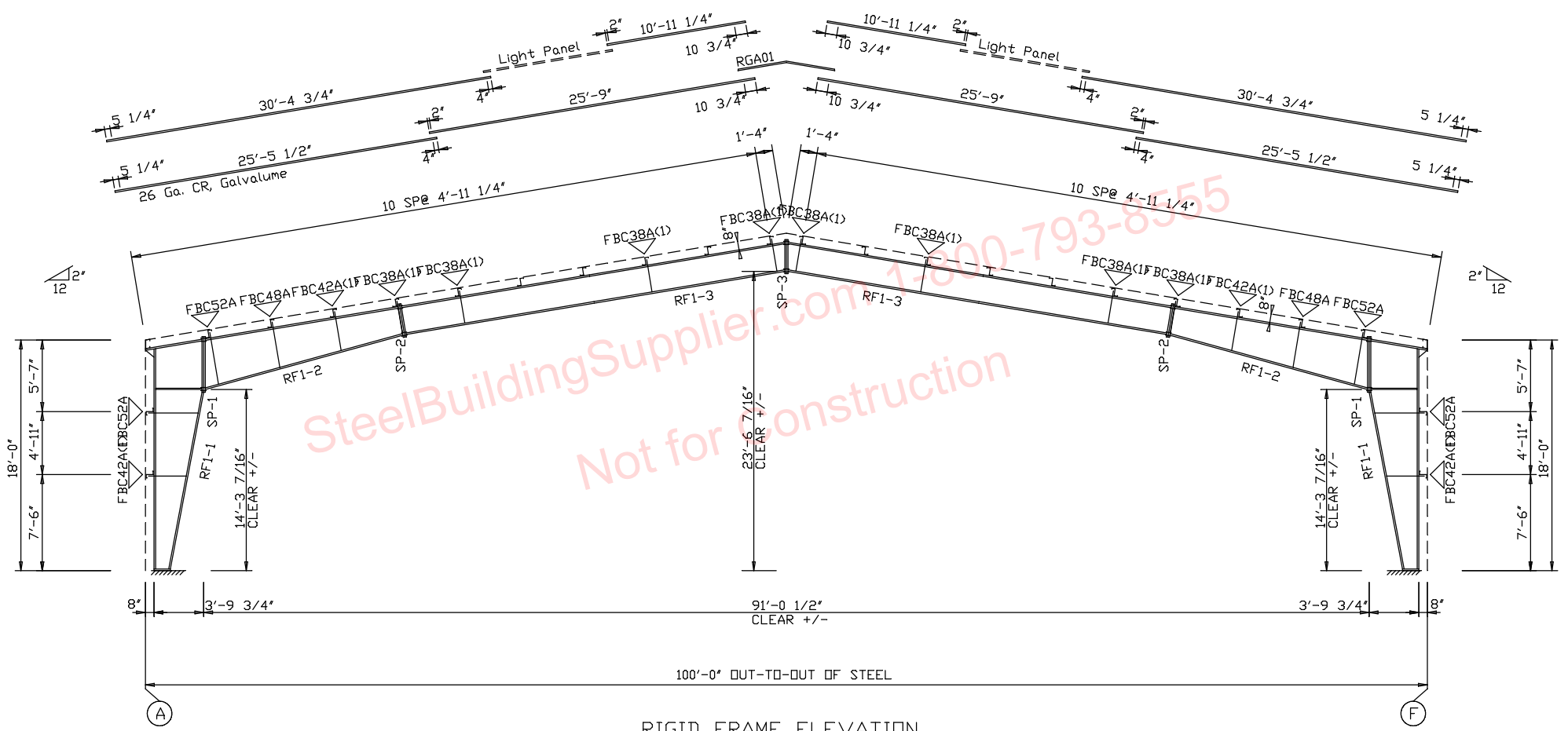
- Dia= 1/2"
- Dia= 3/4"
- Dia=1 1/4"



Splice Mark	SPLICE BOLTS			BOLT		
	Top	Bot	Int	Type	Dia	Len
SP- 1	4	4	0	A325	1.000	3.25
SP- 2	4	4	0	A325	1.000	3.25
SP- 3	4	4	0	A325	0.625	2.25

MEMBER SIZE TABLE (in)

FLANGE BRACES: Both Sides (Unless Noted)
A - L2525105



RIGID FRAME ELEVATION
FOR FRAME LINE 2 3 4 5 6 7